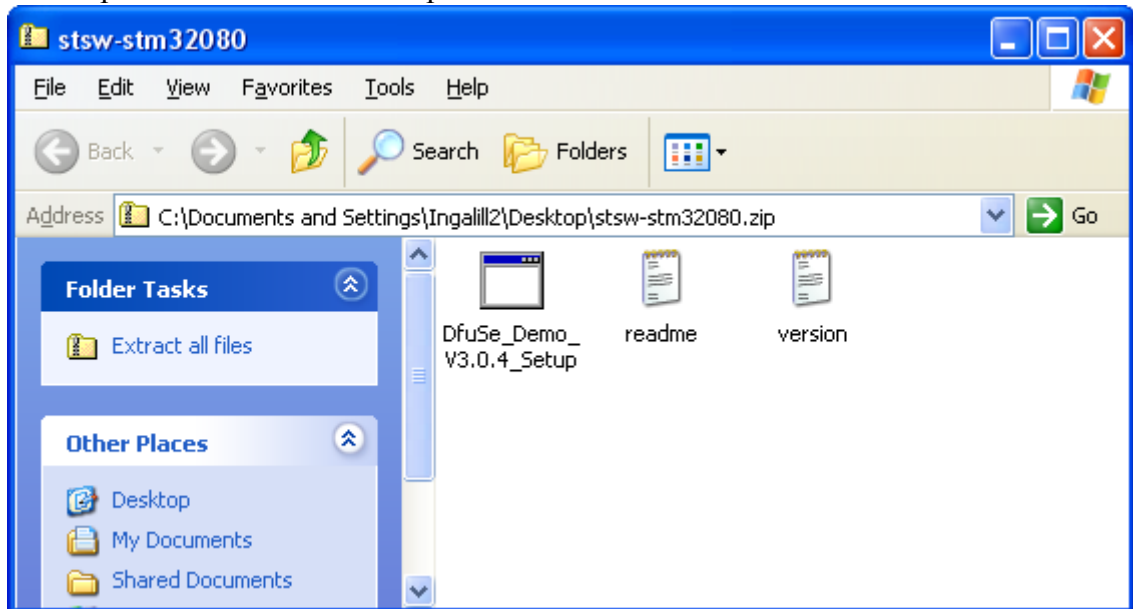


How to install software and USB-drivers for EasySplicer firmware upgrade.

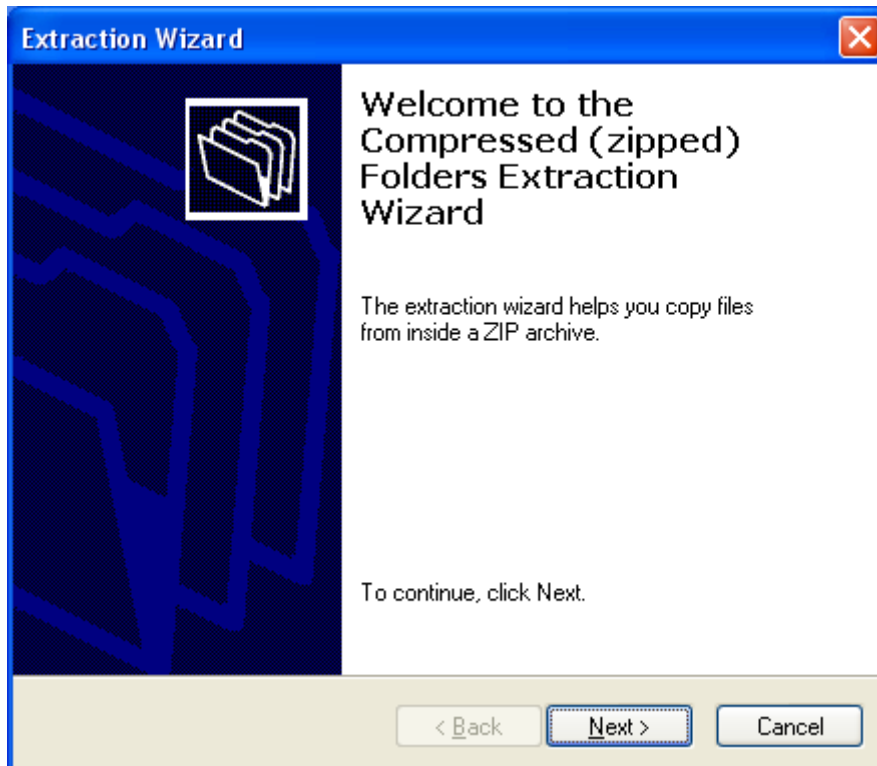
1. Open the stsw-stm32080.zip file.



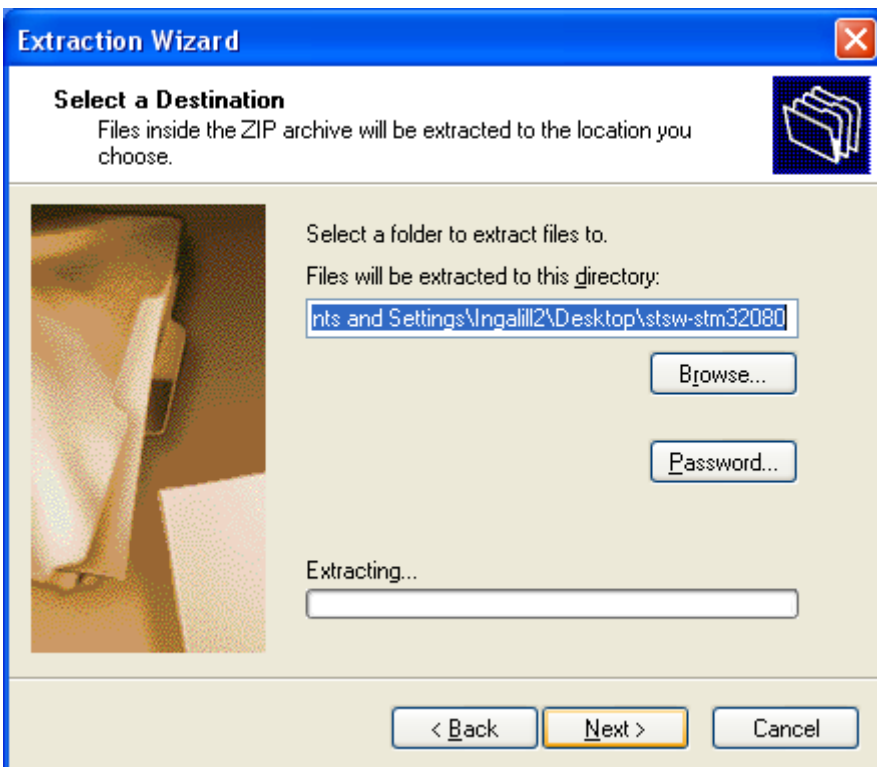
2. Start DfuSe Demo V3.0.4 Setup program.



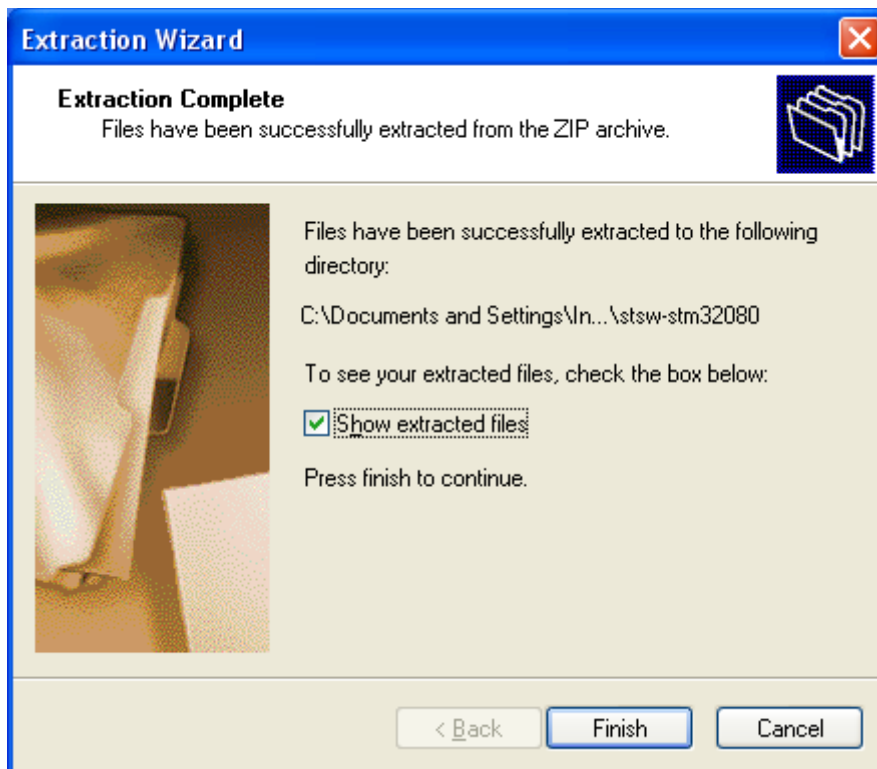
3. Click Extract all.



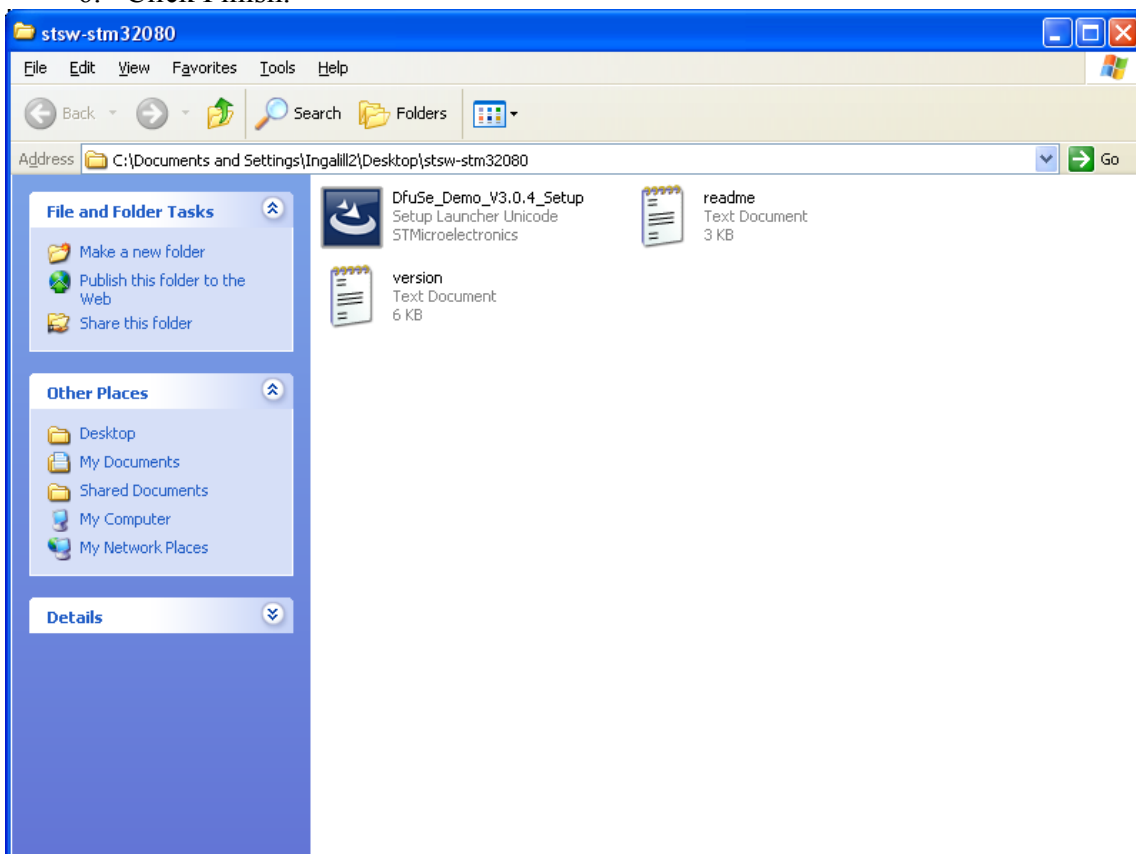
4. Click Next.



5. Click Next.



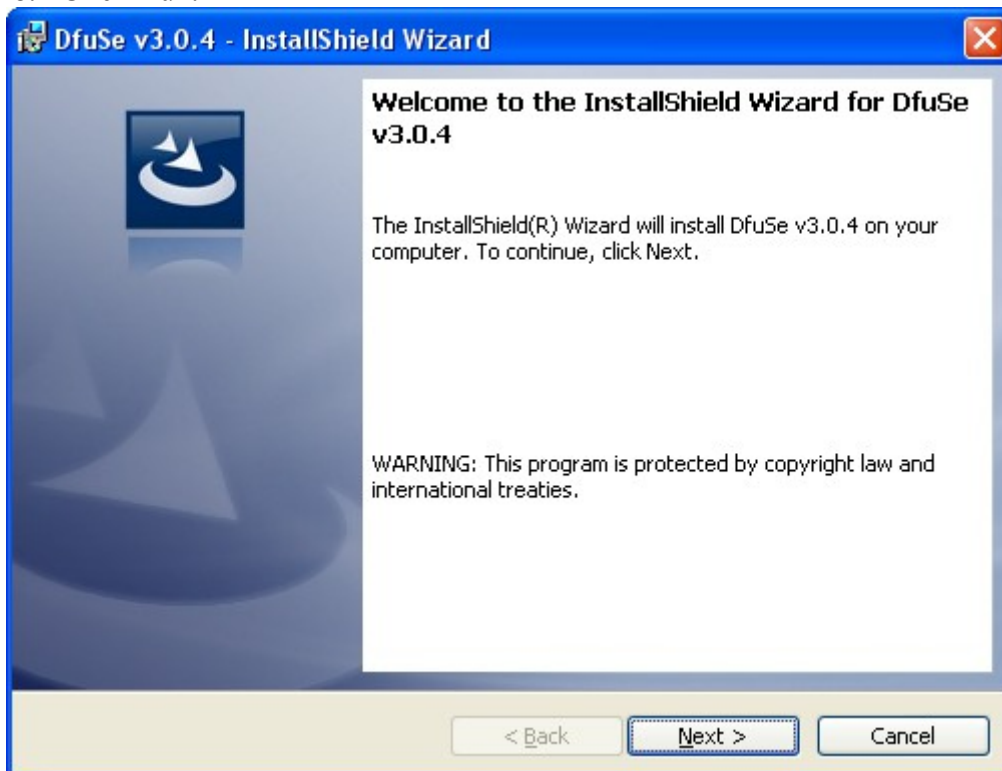
6. Click Finish.



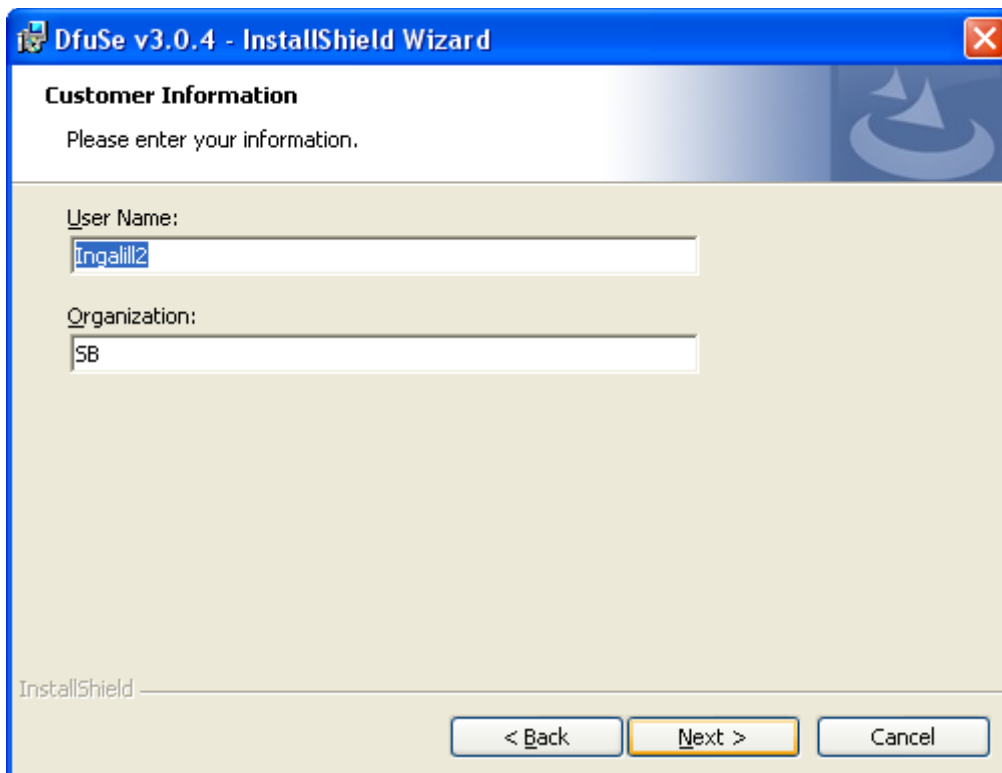
7. Start DfuSe_Demo_V3.0.4_Setup installation program.



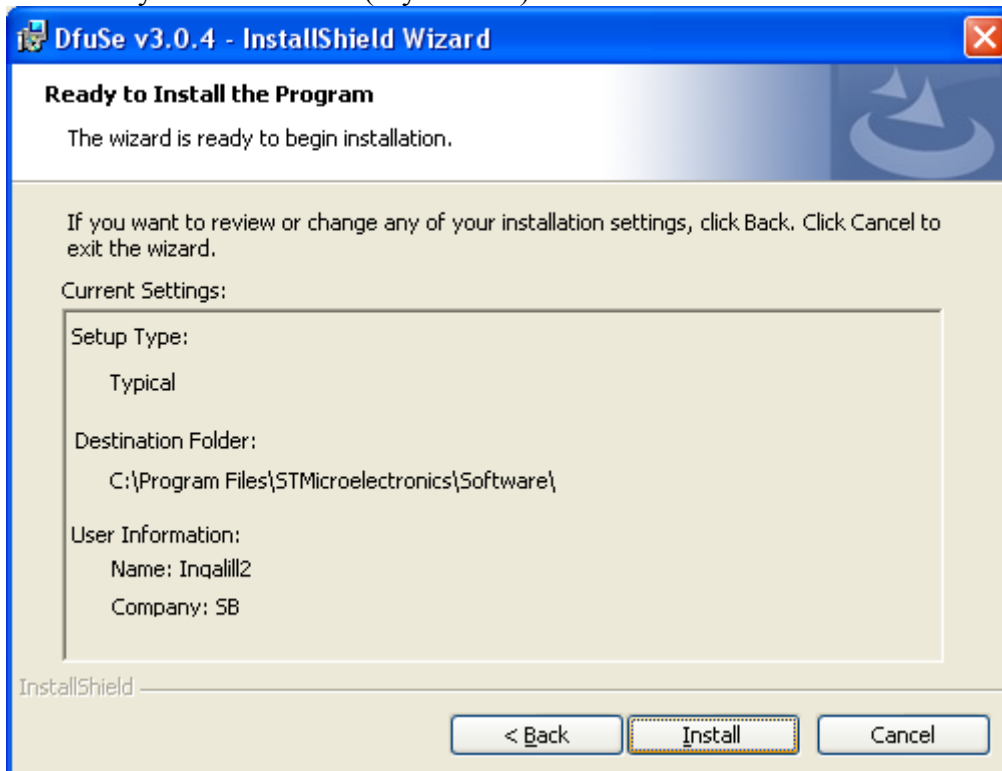
8. Click Run.



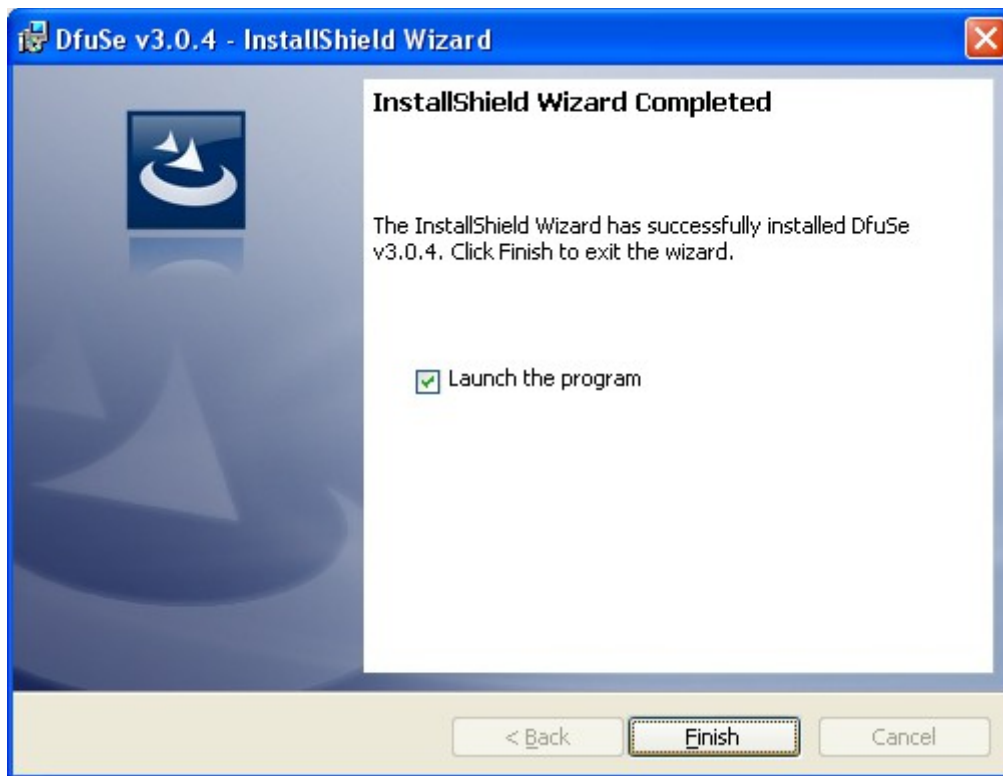
9. Click Next.



10. Enter your information (if you want) and click Next.

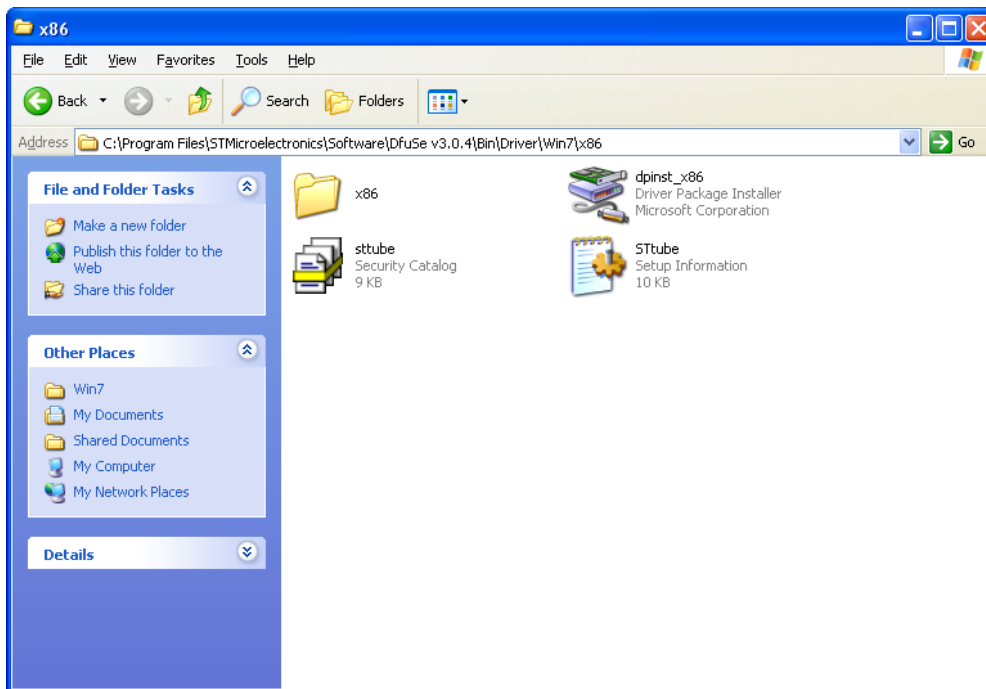


11. Click Install.



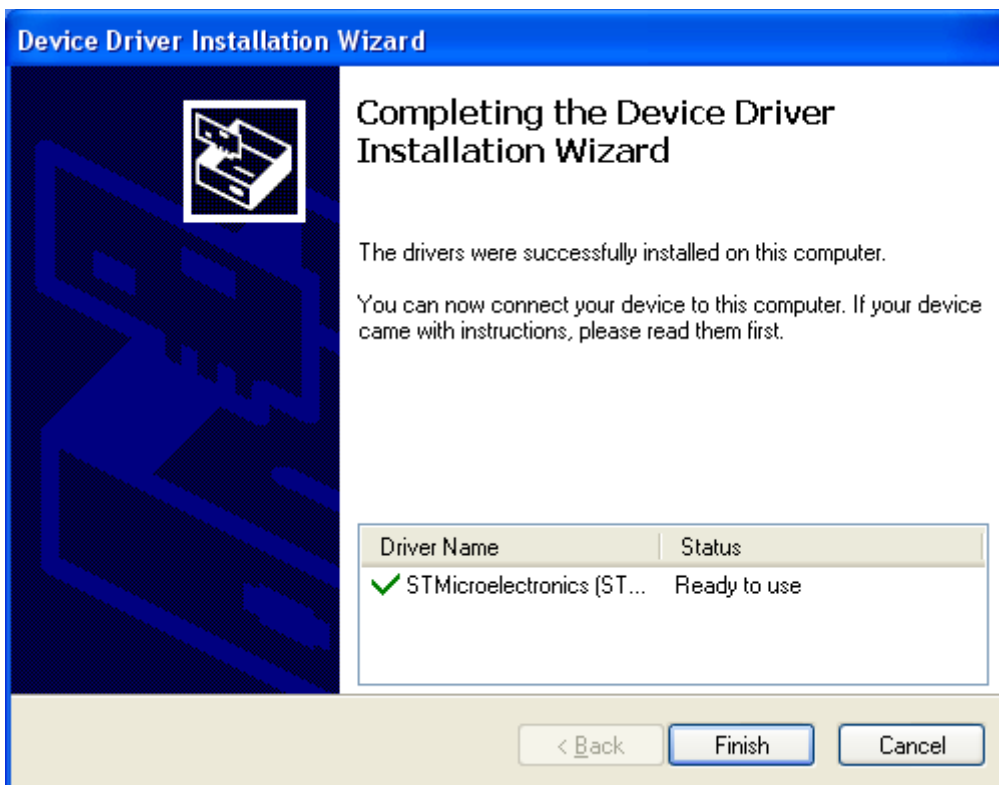
12. Click Finsh.

Install USB driver.

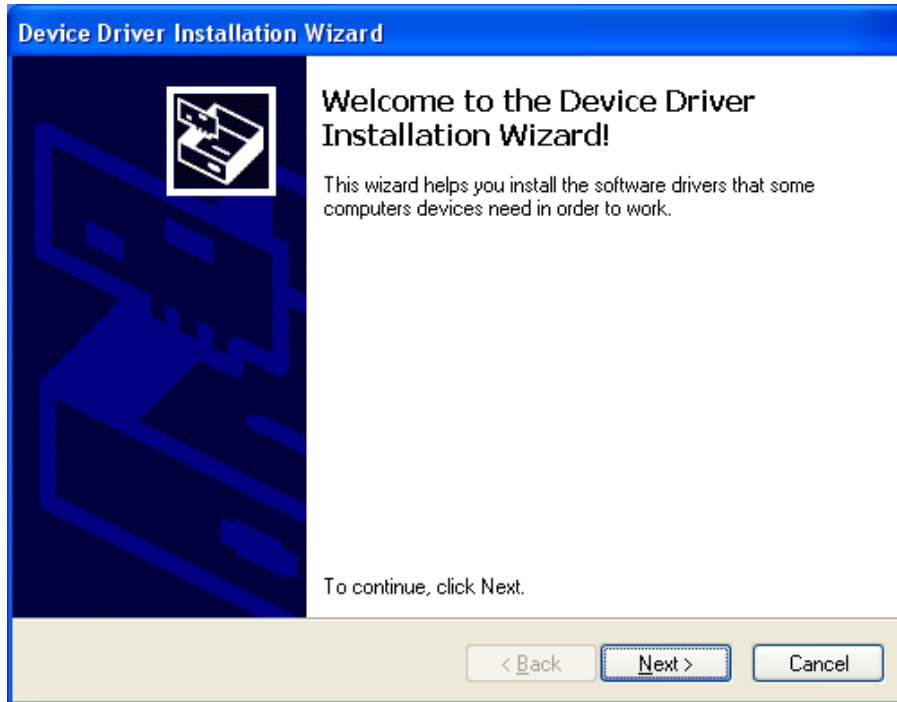


1. Locate the driver location. It should be similar to the above picture. Start the dpinst program. It will be named slightly different in the different windows versions.

Or You can find the driver.zip separately at the same location where You downloaded this PDF file.



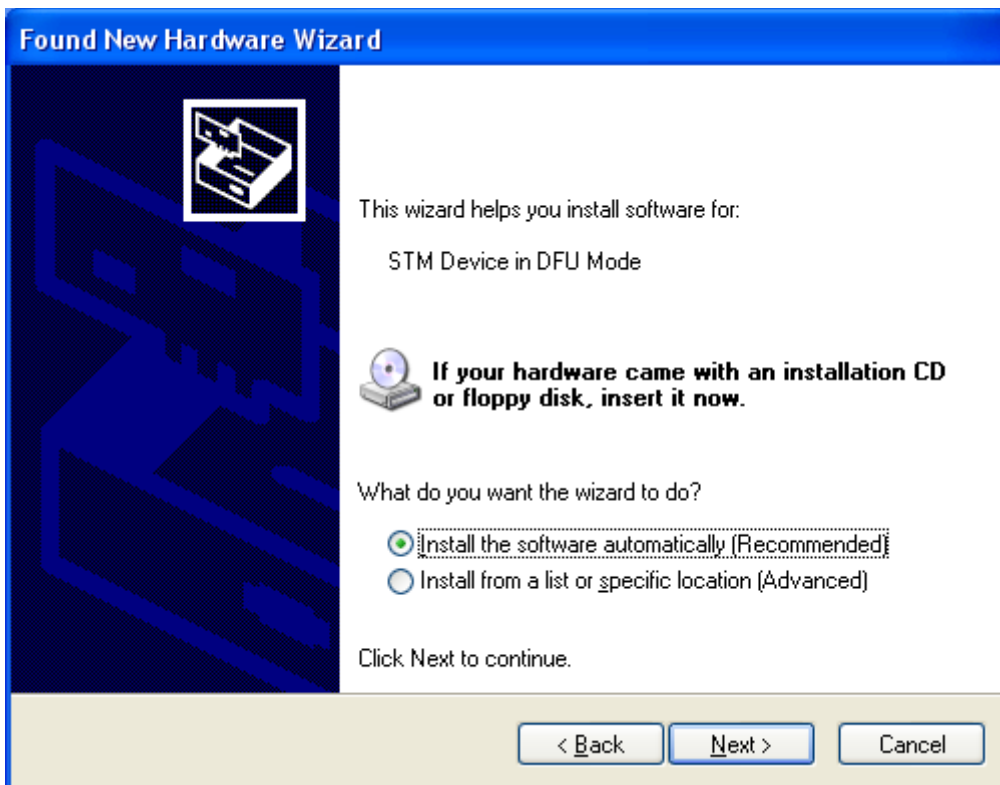
2. Click Finish.



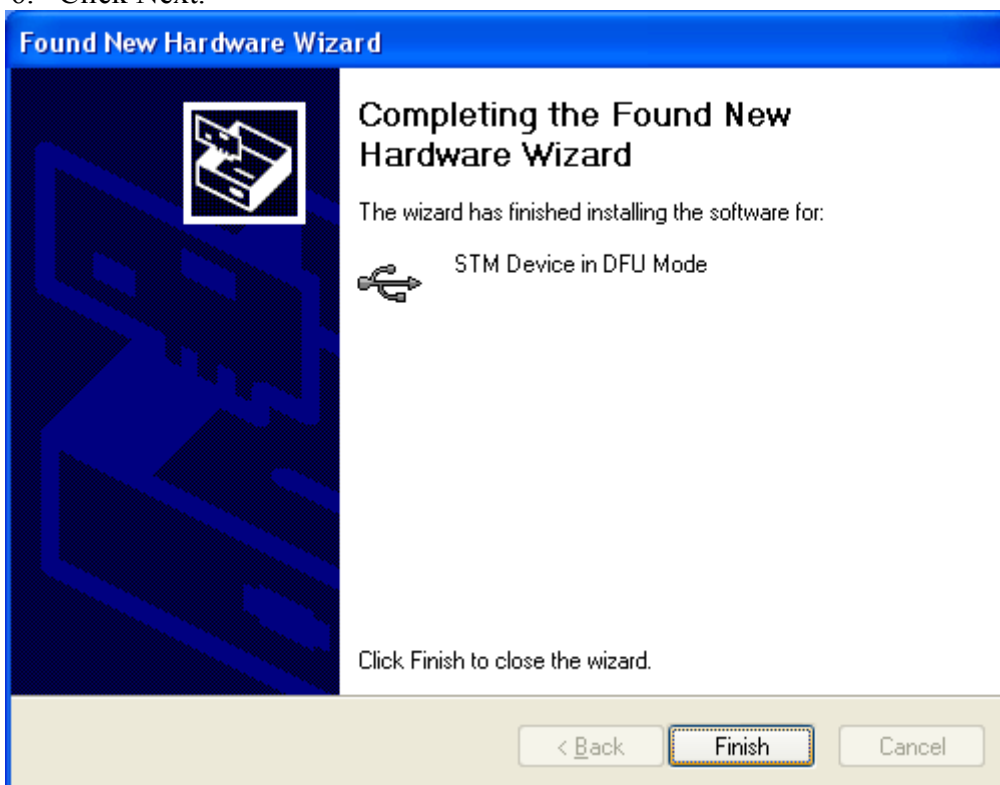
3. Connect EasySplicer to the USB port.
4. Press and hold DOWN button while connecting the charger. The splicer should only have the white led on and the display will stay black.



5. Select No, not this time and click Next.

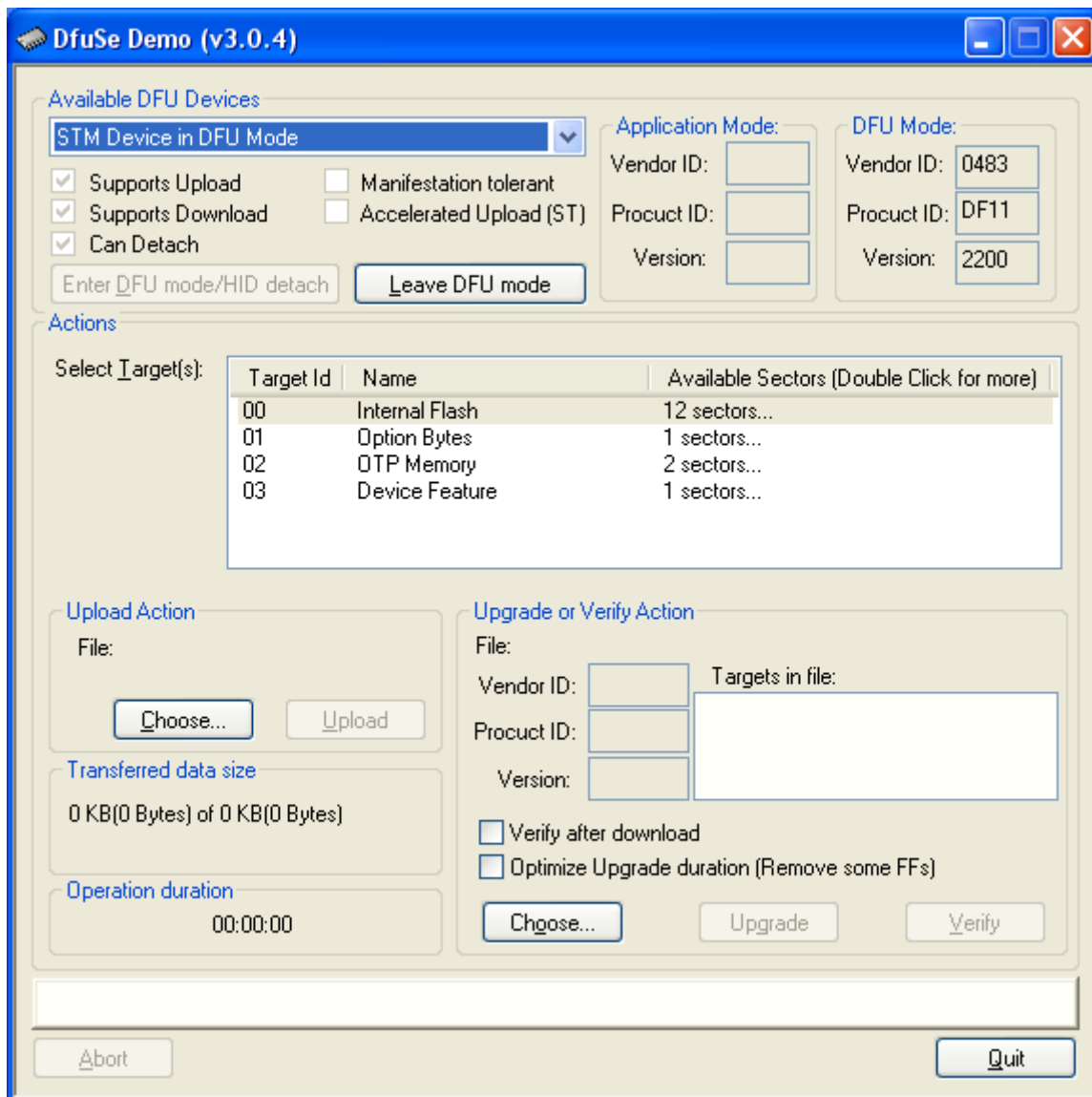


6. Click Next.

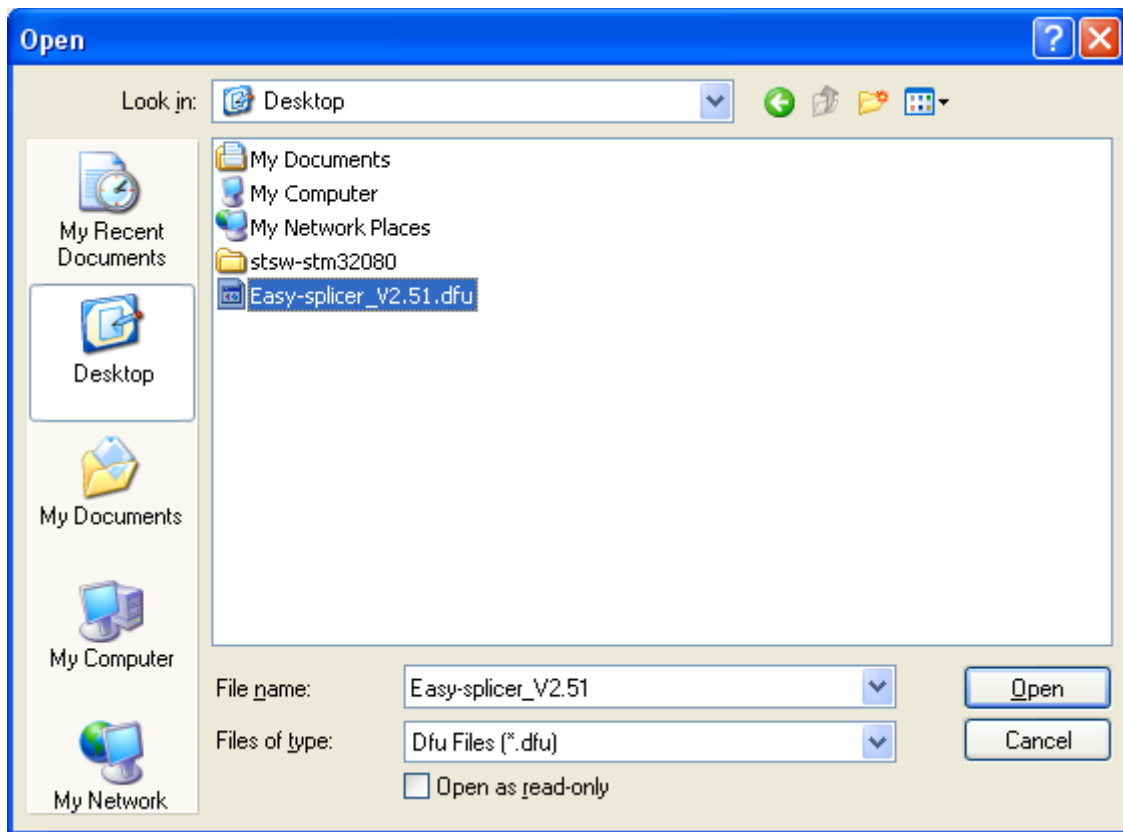


7. Click Finish. Now the drivers are installed.

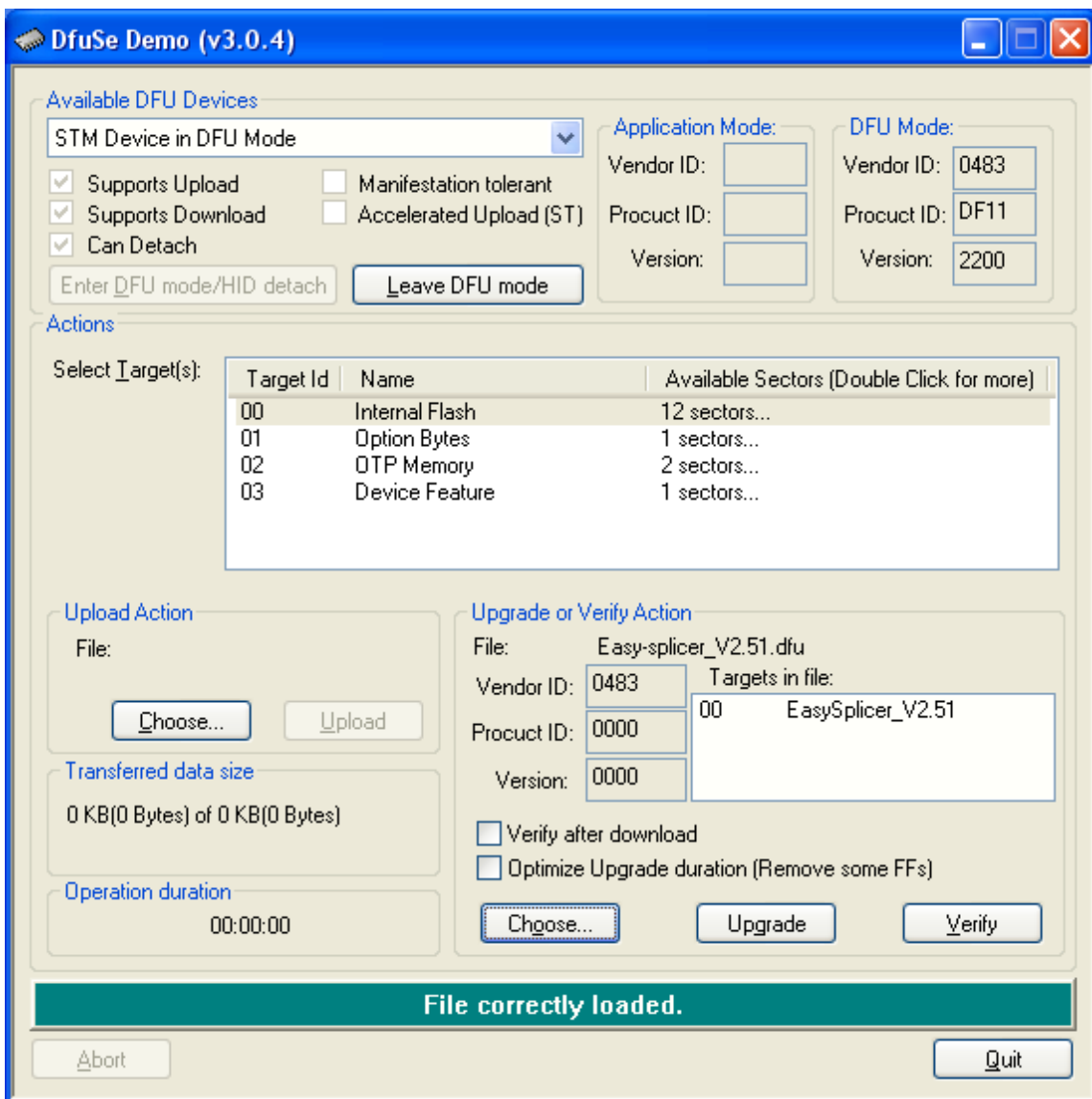
Do the upgrade.



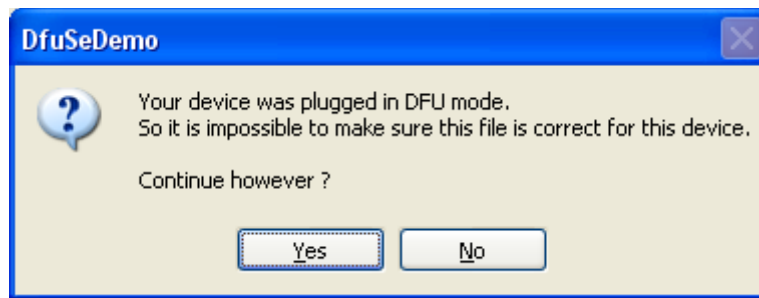
1. Start the DfuSe Demo program. (or it may already be running).
2. Check the box in the upper left corner. It should say STM Device in DFU Mode. If not then connect EasySplicer to the USB port. Press and hold DOWN button while connecting the charger.
3. Click Choose...



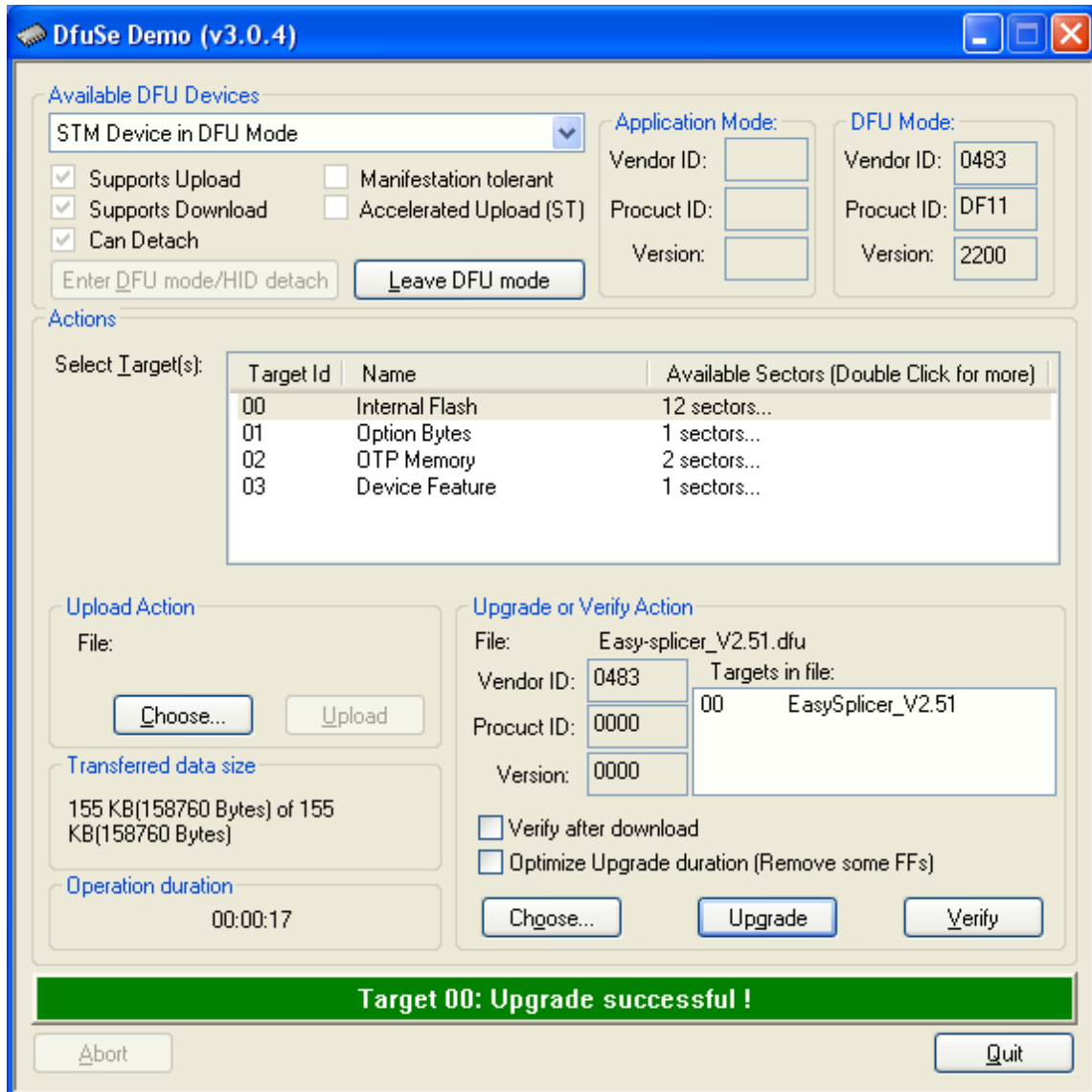
4. Find and select the EasySplicer firmware that you want to install.
5. Click Open.



6. Program should look like this now. Click Upgrade.



7. Click Yes.



8. Upgrade is done. Remove charger and USB cables.